

APS-AER (Model A)

Fundus Camera

- Unique double dots alignment assistance
- Automatic focus&exposure
- Nine internal fixation lights



Product

Features

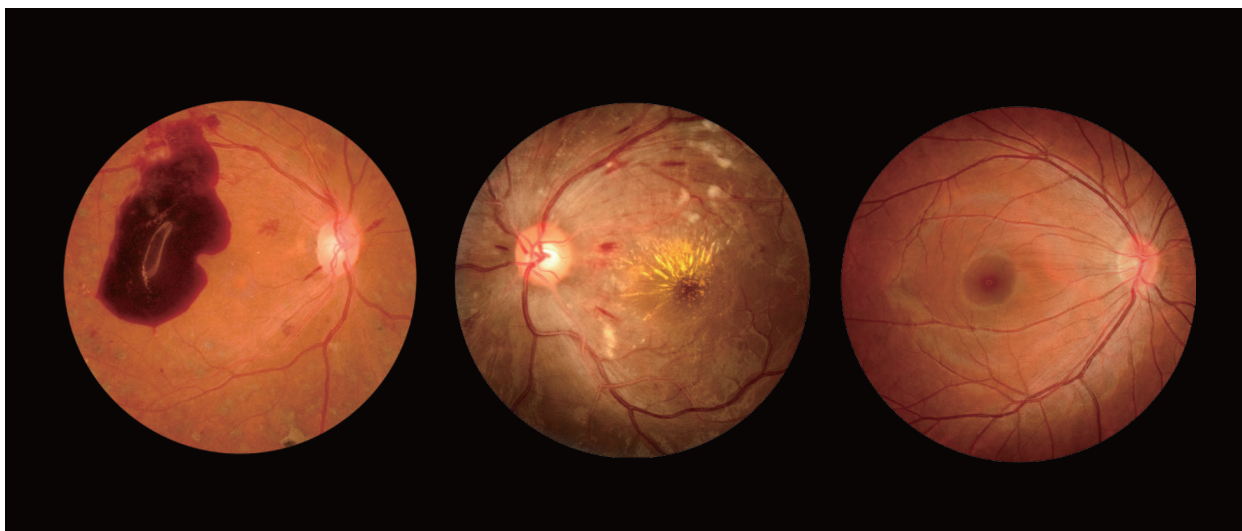
Professional HD DSLR camera with 24.1 megapixels

Auto focus&flash system,

Auto image optimization&stitching

www.kanghuaa.com

kanghua@kanghuaa.com



Multi-point internal fixation lights, enable to observe the retina in different angles

Double dots alignment assistance, enable to operate easily

Automatic image : stitch multiple images seamlessly to present the entire retinal image.

Red-free light: high sensitivity to observe the morphology of retinal nerve fiber layer (optional).

Technical Specification

Camera resolution: 24.1 Mega Pixel

Field of view: Up to 53°

Non-mydratic: Yes

Minimum pupil size: 3.3 mm

Alignment: Two Dots

Function: Color Fundus

Light source: Infrared LED

Diopter compensation: $\geq \pm 15D$

Focus Mode: Auto Focus&Manual Focus

Working distance: 42mm \pm 2mm