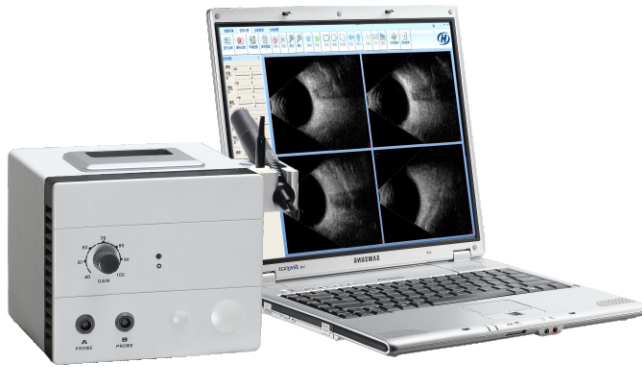


Ophthalmic A/B Scan



CAS-2000BER (Model A)



CAS-2000BER (Model B)

Product Features:

- ⊙ Computerized software, acquisition and processing;
- ⊙ DICOM3.0 interface (**Optional**), common database of cases;
- ⊙ Dynamic playback B scan image, never miss out any detail;
- ⊙ B scan grey scale reaches 256, image is more delicate;
- ⊙ Post processing: lesion analysis, measurement calculations, zooming, etc.
- ⊙ Laser printer: higher precision, lower printing costs

Technical Specification

B Scan		A Scan	
Scan Mode	Sector	Probe Frequency	10MHz
Scan Angle	53°	Measurement Accuracy	≤0.04mm
Detect Depth	≥50mm	Measure	ACD, Lens, Vitreous, Axial Length and its average
Probe Frequency	10MHz		
Scan Line	512 Lines	Modes	Manual, Automatic
Gray Scale	256	Data processing Results	IOL Parameter Selection Table
Display Model	B, B+B, B+A	Output Mode	Laser Printer
Image Storage	Freeze 10 images		
Image Post Processing	Brightness, comparison, smooth, sharp, gray, stretch, equalize, etc.	IOL Table Calculate	SRK-II, SRK-T, Hoffer-Q, Holladay, SCDK, Halgis.



INSAF TRADING COMPANY

118/17/KA, Shewrapara, Mirpur, Dhaka-1216

Tel: +88-0258054357, Mobile: +88-01894935750

Email: info@insaftcbd.com, Web: www.insaftcbd.com